



Introducing TARGET

The new Technical Assistance
facility for regions undergoing
green energy transition

23 March 2022



Agenda

- 14.00 – 14:05 Welcome: technical and organisational
- *Maria Yetano Roche, Secretariat of the Initiative for Coal Regions in Transition – session moderator*
- 14.05 – 14.15 Introduction: Welcome & policy context
- *Adela Tesarova, Head of Unit for Consumers, Local Initiatives, Just Transition, DG ENER, European Commission*
 - *Ralf Goldmann, Head of Division for Energy Efficiency and Energy Advisory, European Investment Bank*
- 14.15 – 14.45 TARGET Technical Assistance: what you need to know
- *Brieuc Posnic, Team Leader – Just Transition, Consumers, Local Initiatives, Just Transition, DG ENER, European Commission*
 - *Sarunas Bruzge, Economist, European Investment Bank*
- 14.45 – 15.00 Q&A with all speakers
- 15.00 – 15.45 Breakout groups
- *Participants divided into breakout groups for further discussions*

A few guidelines before we begin

- Please **use the chat to ask questions** during the Q&A session.
- Please **turn off your camera and microphone** unless you have the floor.
- **At the end of the webinar, you will be transferred to a breakout group, where you will have the opportunity to take the floor and ask further questions.**
- If you encounter any technical issues or have any questions you can reach us in the chat, or by sending an email to events@coalregions.eu



Welcome & Policy Context

Adela Tesarova

Head of Unit, DG Energy, European Commission

Ralf Goldmann

Head of Division, European Investment Bank

23 March 2022





TARGET Technical Assistance: what you need to know

Brieuc Posnic

European Commission, DG ENER

Sarunas Bruzge

European Investment Bank

23 March 2022



1

Why TARGET?

Brieuc Posnic, European Commission, DG ENER

Why TARGET?

Helping EU coal, peat and oil shale regions perform a just transition is a priority for the Commission and a pillar of the Green Deal

Current context (high energy prices, REPowerEU) calls for an acceleration of the roll out of clean energy production and increased energy savings

Funding is available aplenty, including EU funding (new MFF, RRF, JTF, etc.)

Capacity to come up with projects is sometimes lacking at local level

TARGET *aims to accelerate the transition by providing support to EU coal, peat and oil shale regions to roll out clean energy and energy efficiency solutions*

TARGET stands for:

Technical
Assistance for
Regions undergoing a
Green
Energy
Transition



European
Commission



European
Investment
Bank

The EU bank

2

Activities

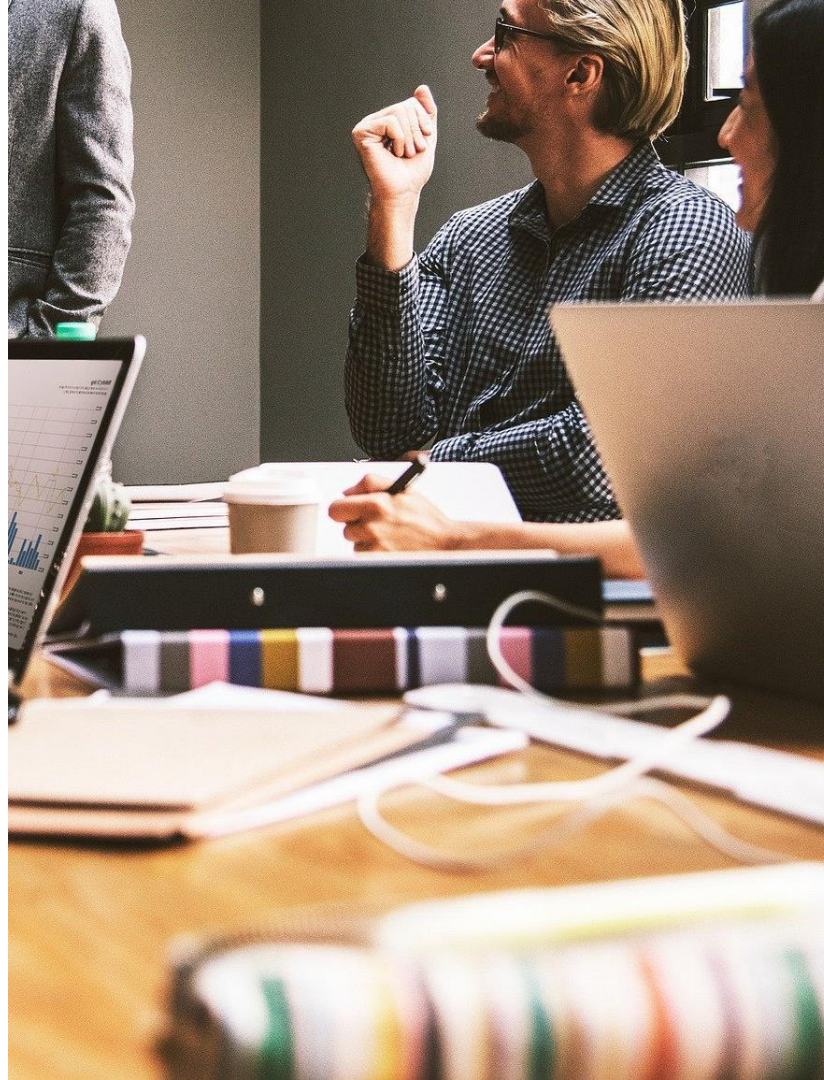
Sarunas Bruzge, European Investment Bank

TARGET

Activities

- identification of projects;
- guidance to bring potential projects to mature level;
- guidance on improving project quality and alignment to the relevant EU objectives;
- guidance on potential sources of funding;
- capacity building of beneficiaries;
- preparation of projects for support from other initiatives and support programmes;
- support for public authorities in project pipeline development.

Potential beneficiaries: regional and local authorities, project promoters (both public and private), energy communities.



TARGET

Working procedures

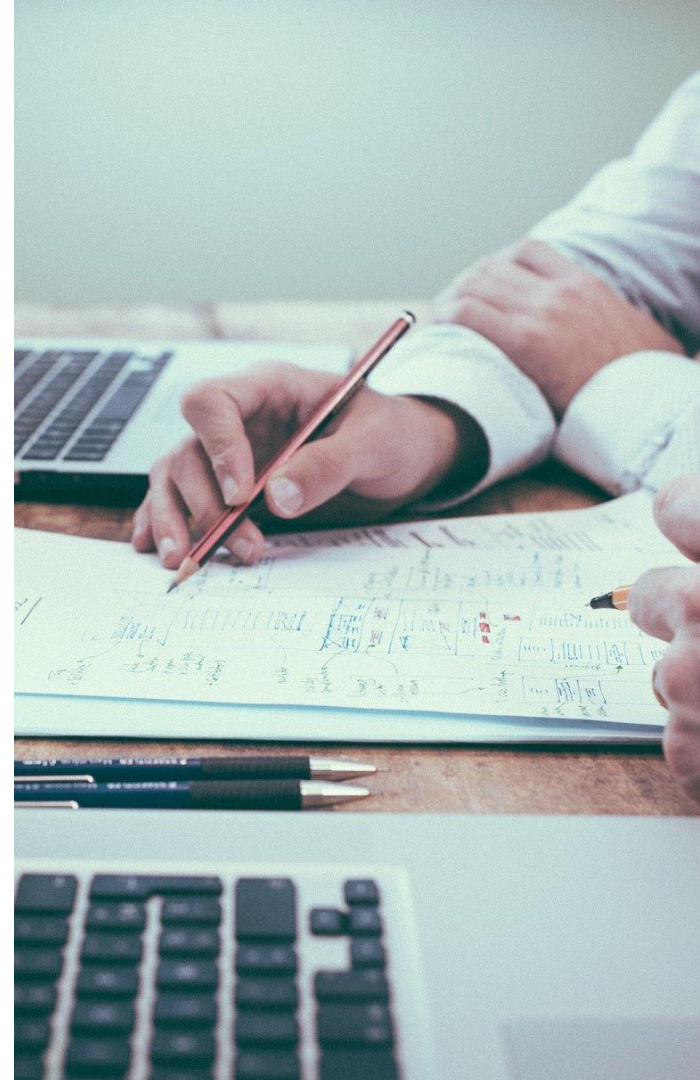
- Individual and tailor made approach to each project;
- Advice during meetings, video conferences, calls or other means of communication;
- Provision of guidance by issuing guidance notes;
- Reliance on both in house and external expertise;
- Handholding to other technical assistance instruments in the EIB;
- Simultaneous translation during meetings and machine translation of documents if needed.

TARGET

Resources

TARGET mainly provided by a dedicated EIB staff (economists, engineers, environmental specialists).

In case of need external service providers could be hired to assist the EIB team.



TARGET

Types of projects

- A company rolls out clean energy production on former mining sites;
- A district heating company upgrades its distribution grid and decarbonises its heat source;
- A regional authority develops a pipeline of clean energy and energy efficiency projects for its coal-dependent communities;
- A coal mining town develops a building renovation programme for affected local communities;
- A regional authority develops a pipeline of renovation projects of public buildings;
- A local community intends to set up a new renewable energy community to help produce clean energy and reduce the energy bills of local consumers.

3

Eligibility rules

Brieuc Posnic, European Commission, DG ENER

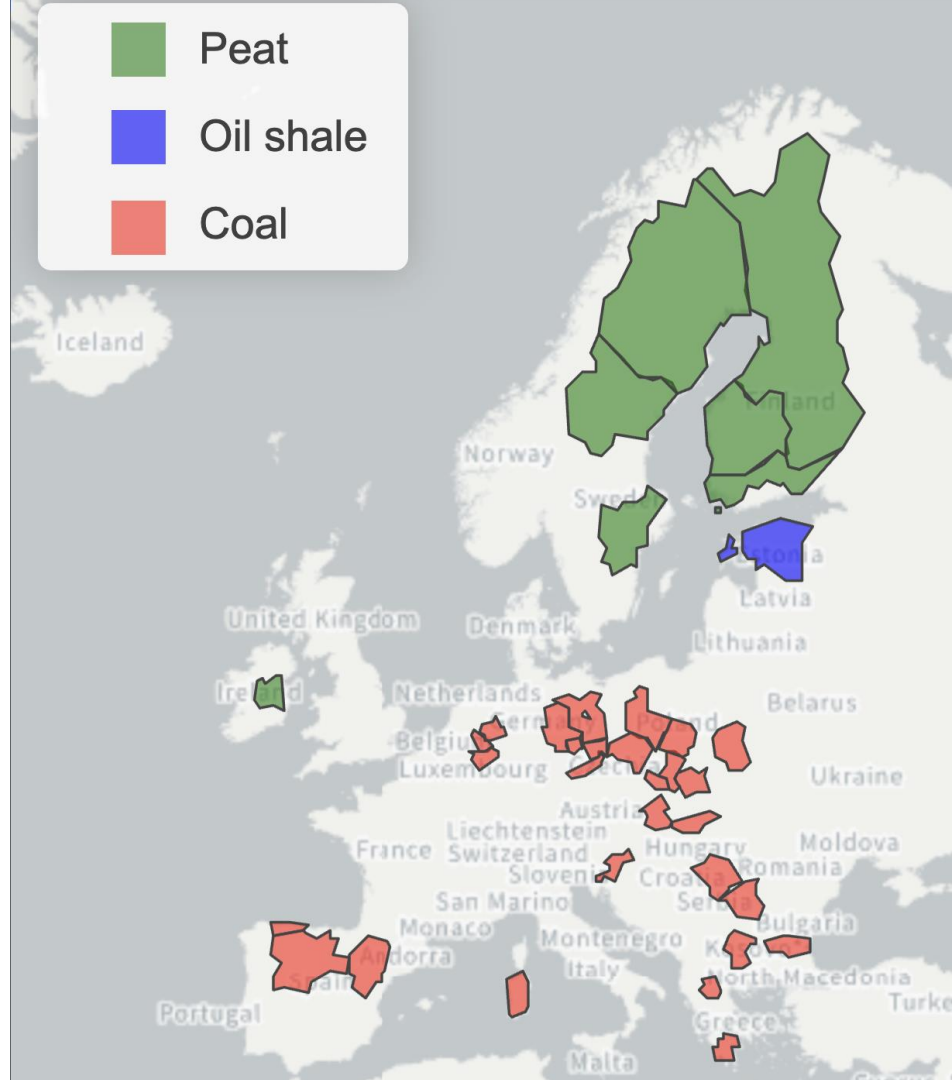
Eligibility rules

Geographical scope

Which areas are eligible to support?

Strict eligibility criteria: project to be supported is located in an EU coal, peat and oil shale region, as defined for the purpose of the EU initiative for coal regions in transition - at NUTS-2 level (see map)

Refined criteria: *project to be supported is directly benefitting an area where support is needed (e.g. in a locality where a mine or a power/heating plant is planned for closure)*



Eligibility rules

Thematic scope

What kind of projects can be supported?

“Clean energy and energy efficiency”

Roll out of clean energy solutions (wind, solar, green hydrogen, etc.) – no matter the scale or the legal form (e.g. energy community, cooperative, etc.).

Energy efficiency, with e.g. deep, thermal renovation and/or switch of heating sources for clean heating, especially in residential and public buildings (e.g. schools, hospitals).

“Just transition”

Create jobs locally;

Benefit those most affected – e.g. jobs created in locality where jobs in coal mining are to be lost, deep, thermal renovation to the benefit of energy poor consumers, etc.



European
Commission



European
Investment
Bank

The EU bank

Eligibility rules

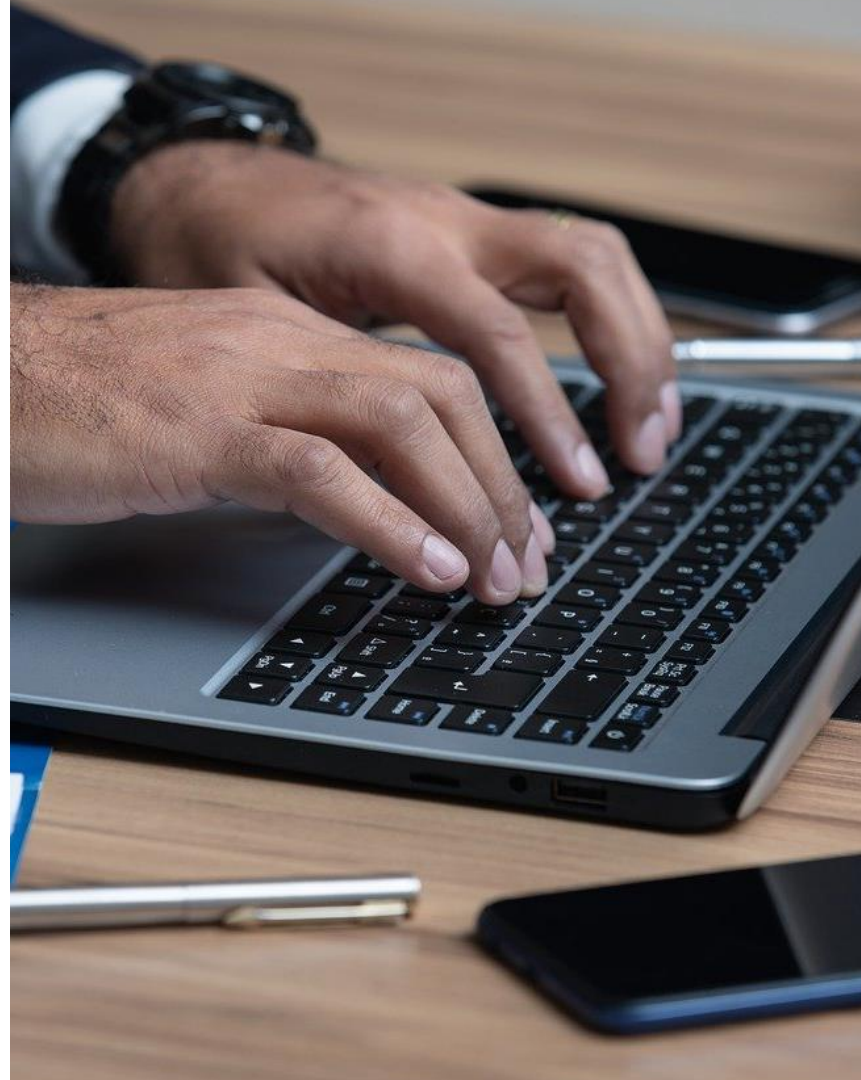
Applicants

Who can apply?

Public or **private** entities and project-promoters;

TARGET is not linked to a specific funding mechanism, project can be designed to any kind of funding (e.g. EU, national, loans, etc.)

No "size limit" for projects



4

How to apply?

Sarunas Bruzge, European Investment Bank

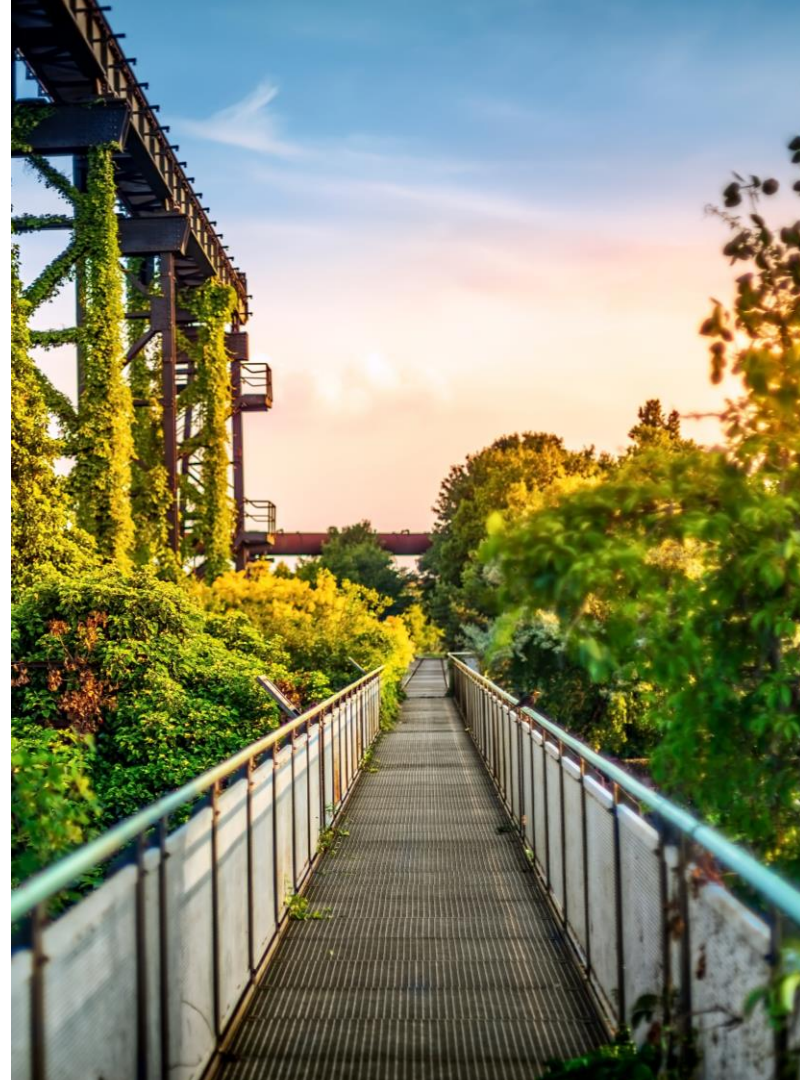
TARGET

Application process

Bottom up project identification

Application form to be sent to EIB
(target@eib.org) for evaluation

Final decision to grant support made by
European Commission



TARGET

Application Form

Part 1: Background Information

1. Project Promoter/Final Beneficiary and relevant contact person(s) details

*Please fill in the information below for each promoter/final beneficiary linked to this assignment
(i.e. by duplicating this table if necessary).*

Location of project (country and NUTS-2 region)	
Entity/Institution	
Type of entity/institution	<input type="checkbox"/> Public, <input type="checkbox"/> Private
SME ¹	<input type="checkbox"/> Yes, <input type="checkbox"/> No
Contact Person	



TARGET

Application form

Type of assignment (more than one category could be selected)

- ☐ Support for preparation of individual project
- ☐ Support for preparation of group of similar projects
- ☐ Upstream support for individual project and hand-holding for the support of other TA instruments
- ☐ Guidance during early stages of project preparation (e.g. guidance for (pre) feasibility study, EIA, public consultation, etc.)
- ☐ Support for public authorities in development of support programmes and/or project pipeline
- ☐ Capacity-building activities



European
Commission



European
Investment
Bank

The EU bank

Part 2: TARGET assignment outline

1. Title of TARGET assignment

Space for your text

2. Objectives and scope of TARGET input

Space for your text (max 2000 characters)

3. Timeline for TARGET intervention

Expected start date	<i>Click or tap to enter a date.</i>
Expected end date	<i>Click or tap to enter a date.</i>

4. Outputs and expected deliverables from TARGET

Space for your text



Part 3: Project details (when applicable)

Project official title (English)	
Project official title (local language)	
Project location	
Sector and subsector of the project	<input type="checkbox"/> Energy efficiency <ul style="list-style-type: none"> <input type="checkbox"/> Building renovations <input type="checkbox"/> District heating/cooling network modernisation <input type="checkbox"/> Other <input type="checkbox"/> Clean energy <ul style="list-style-type: none"> <input type="checkbox"/> Energy (power and/or heat) production from renewable sources <input type="checkbox"/> Energy storage <input type="checkbox"/> Other



1. **Project Description and Objectives**
2. **Project Status and Timing**
3. **Project Costs and Financing Plan**

Applications already open

For more details:
s.bruzge@eib.org



Thank you

More information:

- [European Commission](#) website
- [EIB](#) website

Contact:

secretariat@coalregions.eu

